



Item No. _____

C794

Soft Serve Freezer

Twin Twist

Features

Offers all the popular soft serve variations, from low or non-fat ice creams, to custards, yogurt, and sorbet. Serve two separate soft serve flavors or an equal combination of both in a twist.

Freezing Cylinder

Two, 3.4 quart (3.2 liter).

Mix Hopper

Two, 14 quart (13.2 liter). Separate hopper refrigeration (SHR) maintains mix below 41°F (5°C) during Auto and Standby modes.

Indicator Lights

Mix Low and Mix Out light alerts operator to add mix. Audible alarm may be enabled to sound when mix is low.

Electronic Controls

Softech™ is our exclusive microprocessor-based master control that regulates refrigeration by measuring product viscosity to maintain consistent quality.

Standby

During long no-use periods, the standby feature maintains safe product temperatures in the mix hopper and freezing cylinder.

Freezer Door

A specially designed thermoplastic door allows quick ejection of product. Push forward on the ergonomic draw handle to dispense. Self-closing draw handles are standard.

Door Interlock System

Protects the operator from injury as the beater will not operate without the dispensing door in place.

Two Locking Casters

Front casters have a locking feature for operators to keep equipment in place. The lock can be released to move the equipment for cleaning.

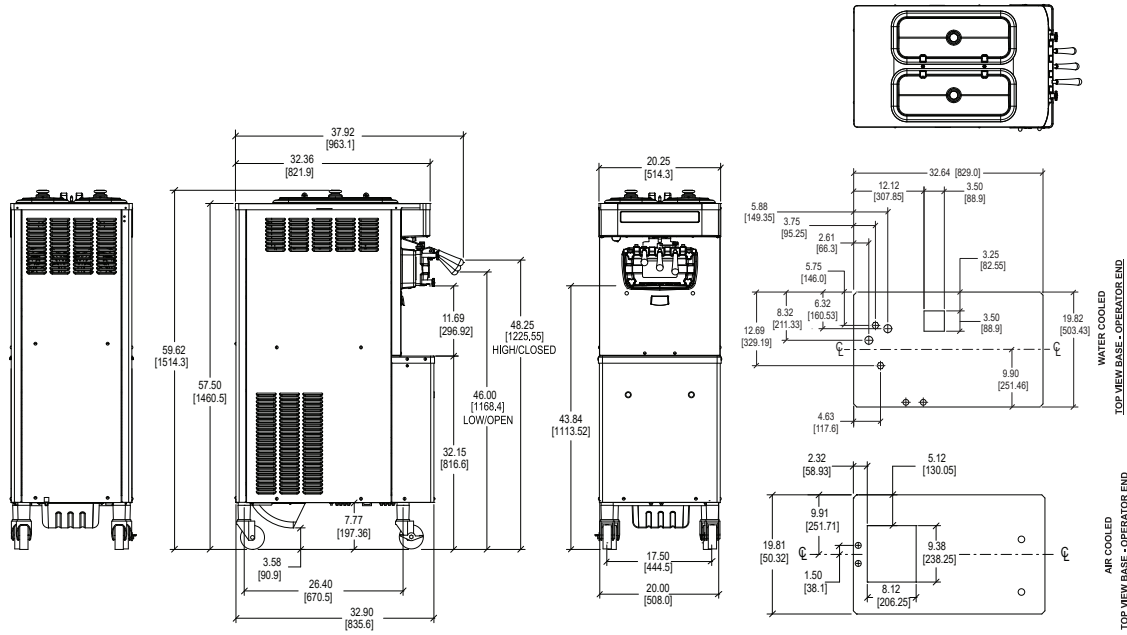
750 N. Blackhawk Blvd. Rockton, Illinois 61072
800-255-0626
Phone 815-624-8333 Fax 815-624-8000
www.taylor-company.com
info@taylor-company.com

ISO 9001:2015
Registered Firm



Standard 6

LISTED
SA2650Selected 50/60
Hz. Models



FIGURES IN BRACKETS INDICATE MILLIMETERS / DECIMAL AND FRACTIONAL DIMENSIONS EQUAL TO (PLUS OR MINUS 1/16 INCH [1.5mm].

| Weights | lbs. | kgs. |
|---------|------|-------|
| Net | 640 | 290.3 |
| Crated | 699 | 317.1 |

*For reference only

| | cu. ft. | cu. m. |
|--------|---------|--------|
| Volume | 48.9 | 1.38 |

| Dimensions | in. | mm. |
|-----------------|---------|------|
| Width | 20-1/4 | 514 |
| Depth | 32-5/16 | 836 |
| Height | 59-5/8 | 1514 |
| Floor Clearance | 4-1/2 | 114 |

*Mounted on standard casters

| Electrical | Maximum Fuse Size | | Minimum Circuit Ampacity | | Poles (P) Wires (W) |
|--------------------|-------------------|-------|--------------------------|-------|---------------------|
| | Left | Right | Left | Right | |
| 208-230/60/1 Air | 25 | 25 | 20 | 19 | 2P 3W |
| 208-230/60/1 Water | 25 | 25 | 20 | 19 | 2P 3W |
| 208-230/60/3 Air | 20 | 15 | 16 | 15 | 3P 4W |
| 380-415/50/3N~ Air | 9 | 8 | 8 | 6 | 4P 5W |

This unit may be manufactured with other electrical characteristics and may have additional regulatory agency approvals. Consult the local Taylor distributor for other electrical characteristics and agency approvals based on specific electrical and country requirements.

(For exact electrical information, approval marks, and refrigerant, always refer to the data label of the unit.)

Continuing research results in steady improvements; therefore, these specifications are subject to change without notice.

Bidding Specs

Electrical: Volt _____ Hz _____ ph _____
 Neutral: Yes No **Cooling:** Air Water NA

Options: _____

All options may not be available in combination with others or with all electrical or cooling configurations. Please consult your local Taylor distributor.

Authorized Taylor Distributor

Specifications

Electrical

Two dedicated electrical connections are required. See the electrical chart for the proper electrical requirements. Manufactured to be permanently connected. Consult your local Taylor distributor for cord and receptacle specifications as local codes allow.

Beater Motor

Two, 1.5 hp.

Refrigeration System

Two, 10,100 BTU/hr. R449A.
 Separate Hopper Refrigeration (SHR), one, 400 BTU/hr. R134a. (BTUs may vary depending on compressor used.)

Air-Cooled

Minimum clearance of 3" (76 mm) around all sides. Install the deflector provided to prevent recirculation of warm air. Minimum air clearances must be met to ensure adequate airflow for optimum performance.

Water-Cooled

Water inlet underside of base 1/2" FPT.

Accessories

- Cone Dispenser
- Draw Handles to meet Americans with Disabilities Act requirements
- Draw Valve Lock Kit
- Syrup Rail Kit (side mount)

Options

- Hopper Agitators
- Rear Mix Lights



750 N. Blackhawk Blvd.
 Rockton, Illinois 61072
www.taylor-company.com